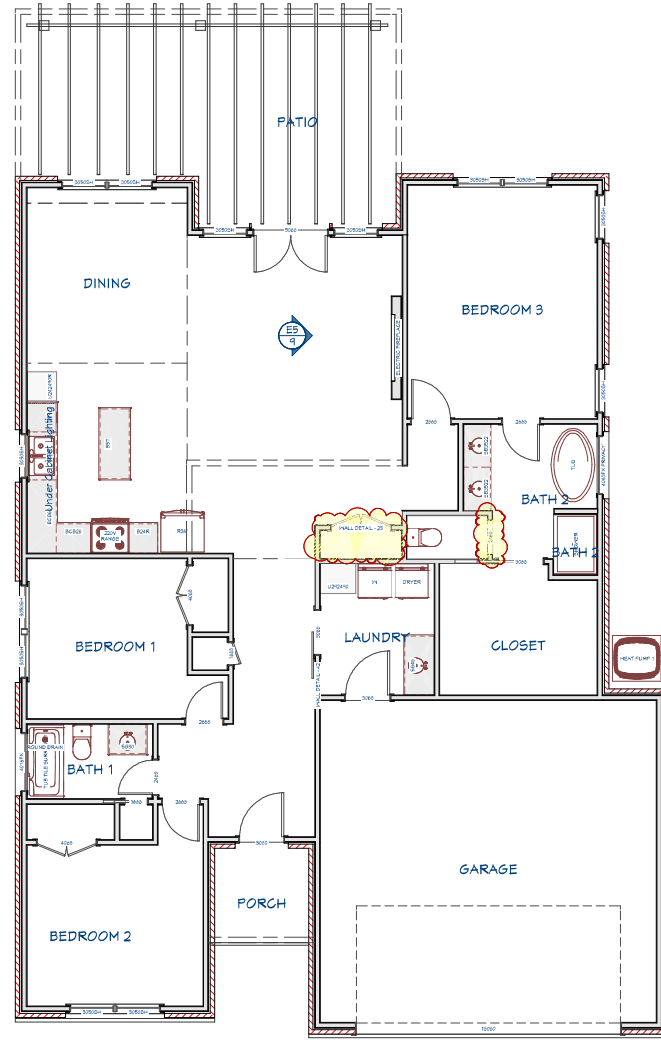




AREA TOTALS:	
LIVING	1772 SQ FT
GARAGE	552 SQ FT
FRONT PORCH	42 SQ FT
PATIO	343 SQ FT
TOTAL FOOTPRINT 2709 SQ FT	
FEATURES: 10' CEILINGS	



LIVING AREA
1772 SQ FT

1st Floor



REVISION TABLE	REVISION BY	DESCRIPTION

OVERVIEW

4514
LONE OAK LANE

DRAWINGS PROVIDED BY:
East Texas Homes, LLC
1803 Judger Rd.
Longview, TX 75601
936-448-2804

DATE:
4/24/2023

SCALE:
None

SHEET:
P-1