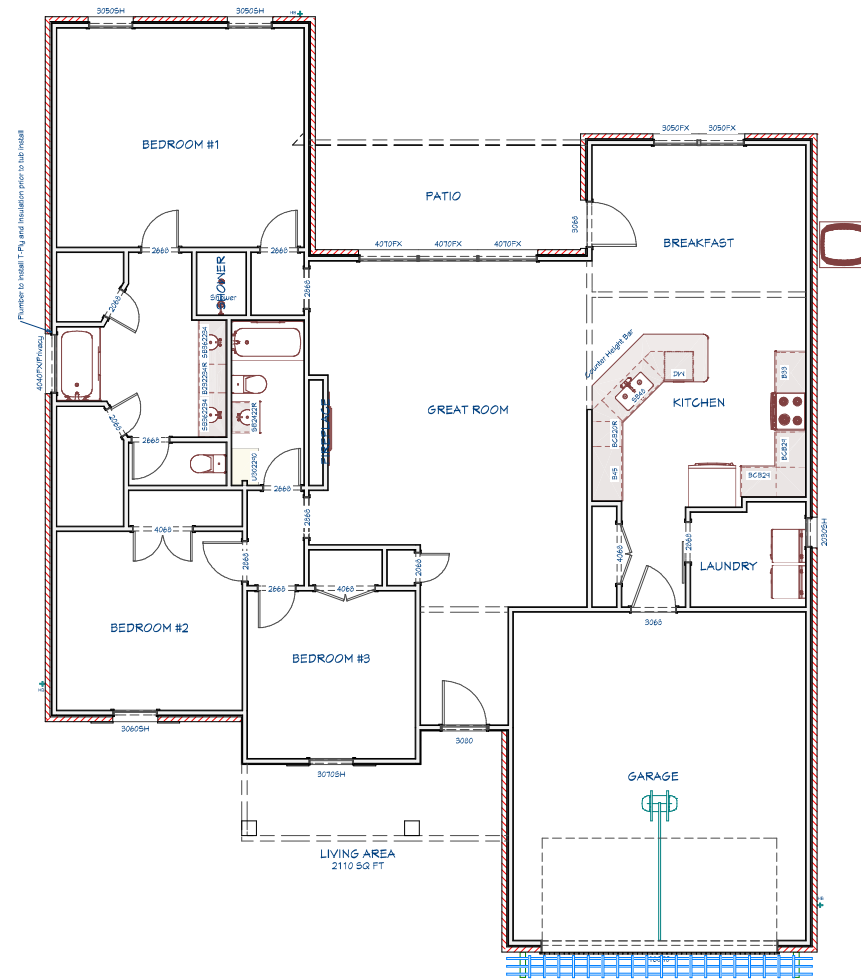




AREA TOTALS:	
LIVING	2008 SQ FT
GARAGE	486 SQ FT
BACK PORCH	135 SQ FT
FRONT PORCH	105 SQ FT
TOTAL FOOTPRINT	2734 SQ FT
FEATURES:	



1st Floor



REVISION TABLE	REVISION BY	DESCRIPTION

OVERVIEW

4523 LONE OAK

DRAWINGS PROVIDED BY:
 East Texas Homes, LLC
 1803 Judger Rd,
 Longview, TX 75601
 903-445-2504

DATE:
 10/29/2022

SCALE:
 None

SHEET:
 P-1